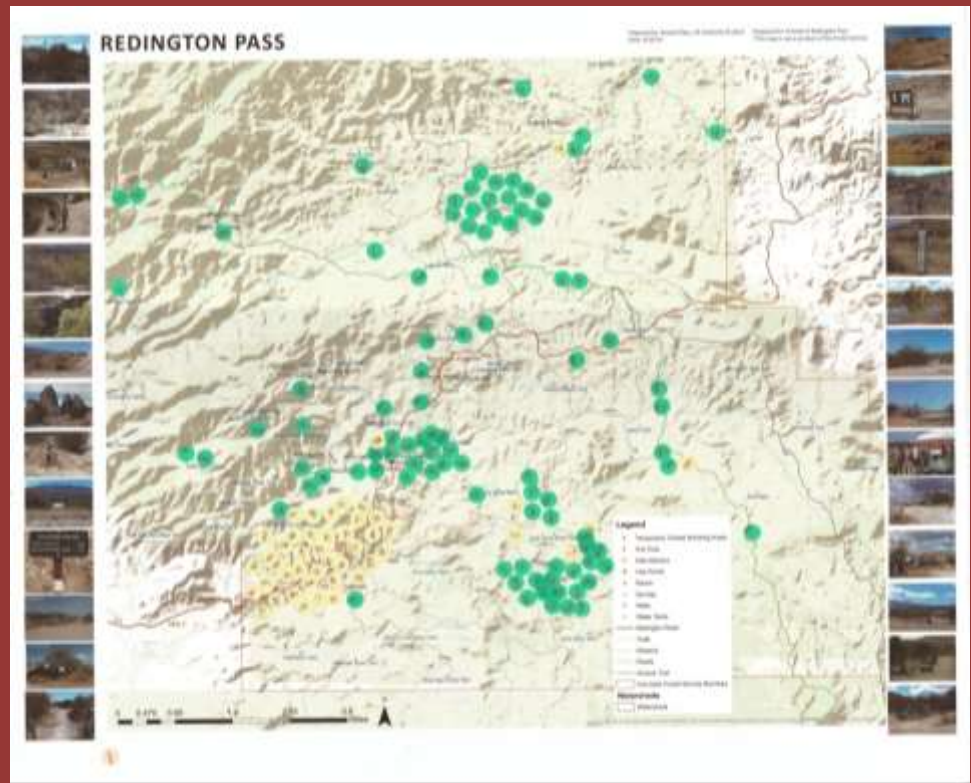


# Community Input Summary



# April 28<sup>th</sup>, 2014 Public Meeting



## Survey questions:

- When was the last time on Pass?
- When do you visit?
- How often do you visit?
- What are your 3 favorite activities?
- What would improve your experience?

# Fall 2014 Online survey: 296 respondents

## Redington Pass User Survey

We have been gearing up our efforts to reach out to people and organizations who visit Redington Pass, as part of the Collaborative Area Management Plan (CAMP) process. Recently we created an online community survey we would like to share with you. Please complete the survey, especially if you were not able to attend our public meeting last spring. You are welcome to forward the survey on to others. The more information we have about how people use Redington Pass, the better informed we will be when developing recommended management strategies to the Coronado National Forest.

[Take the Survey](#)

## Outreach

As part of the CAMP process, we have been meeting with different organizations to get more detailed information about their experiences on the Pass and their issues and concerns. If you are involved with an organization that would like to meet with FRP to discuss Redington Pass, please [email us](#) and we will get back to you promptly to arrange a meeting.

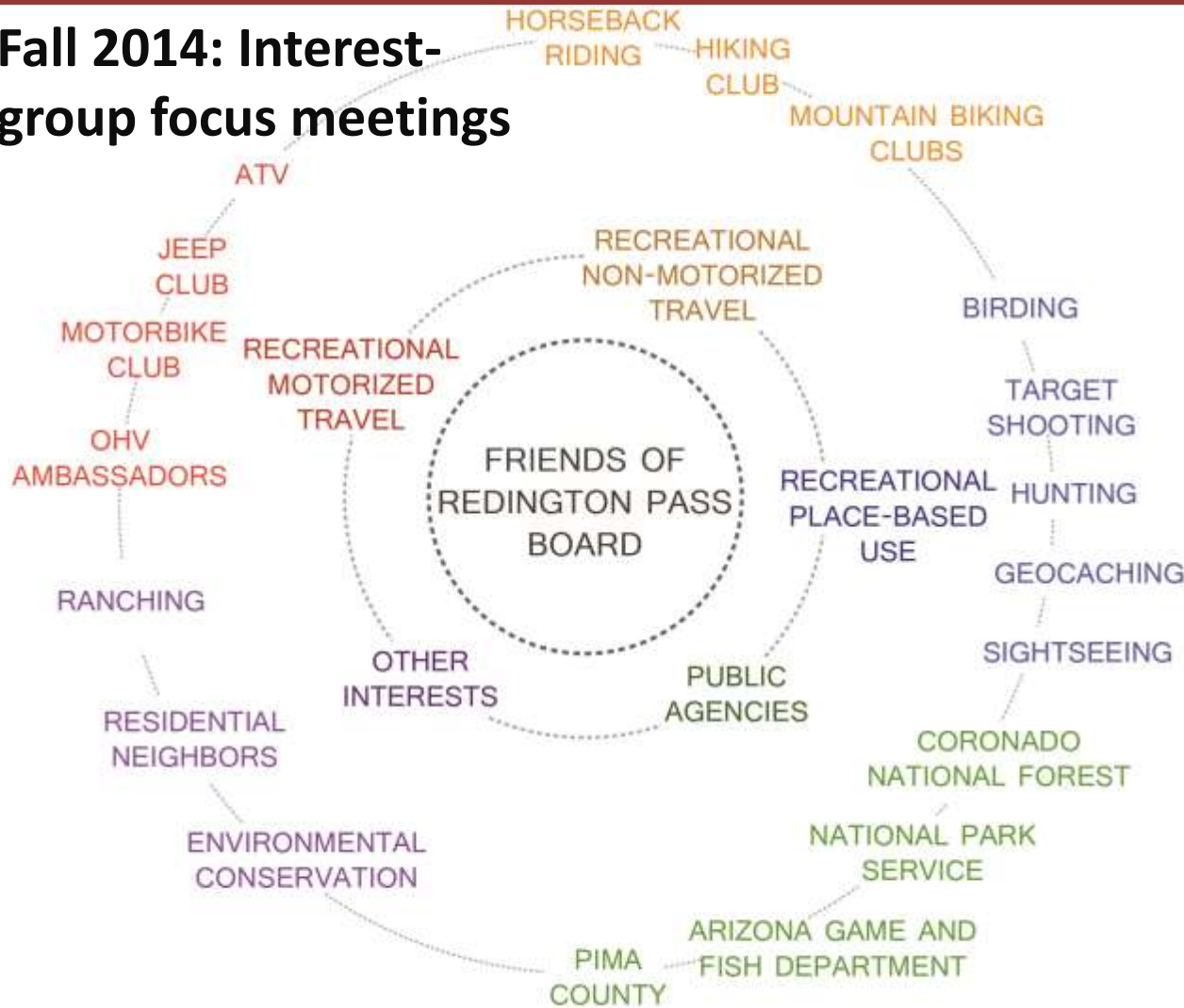
The screenshot shows a web browser window displaying the 'Redington Pass User Survey' form. The browser's address bar shows the URL 'https://www.surveymonkey.com/s/RedingtonPassSurvey'. The survey title is 'Redington Pass User Survey' with the 'FRIENDS of Redington Pass' logo. The form contains the following questions and input fields:

- 1. When was the last time you were up on Redington Pass (month/year)? [Text input]
- 2. How often do you visit Redington Pass?
  - Once a year
  - Twice a year
  - Three times a year
  - Monthly
  - Weekly
  - Other (please specify) [Text input]
- 3. When do you visit the Pass most?
  - Weekends
  - Weekdays
- 5. If you have not been to the Pass recently or do not visit the Pass as much as you used to or might want to, please explain why? [Text input]
- 6. What are your favorite activities on the Pass? (please describe and rank)
  - Most favorite: [Text input]
  - Second favorite: [Text input]
  - Third favorite: [Text input]
- 7. What are your favorite places to visit on the Pass? (please rank)
  - Favorite: [Text input]
  - Second favorite: [Text input]
  - Third favorite: [Text input]

## Survey questions:

- Last time on Pass?
- When do you visit?
- If you don't visit the Pass, why not?
- How often do you visit?
- 3 favorite activities?
- 3 favorite places to visit?
- 3 trouble spots?
- Where do you park on Pass?
- How many hours, miles do you spend on Pass in a given trip?
- What would improve your experience?

# Fall 2014: Interest-group focus meetings



## CLUBS/INTEREST GROUPS

- Southern Arizona Hiking Club
- Trail Riders of Southern Arizona
- Saguaro Horsemen's Association
- Tucson Off-Road Cyclists and Activists
- Sonoran Desert Mountain Bicyclists

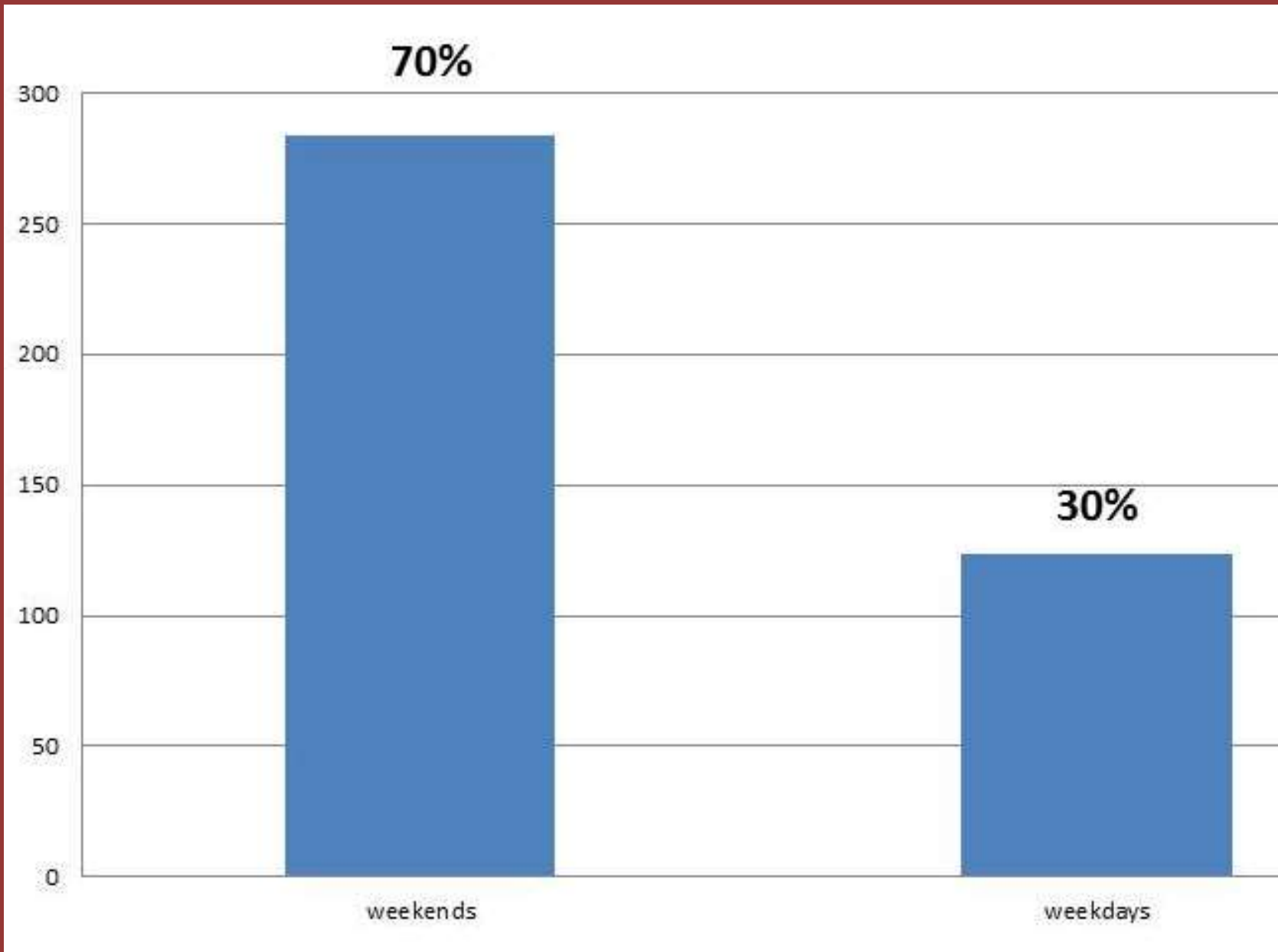
## AGENCIES/ORGANIZATIONS

- Coronado National Forest (SCRD)
- Arizona Game and Fish Department
- Arizona Trail Association
- Environmental advocacy groups
- Le Cebadilla Estates Neighborhood Association

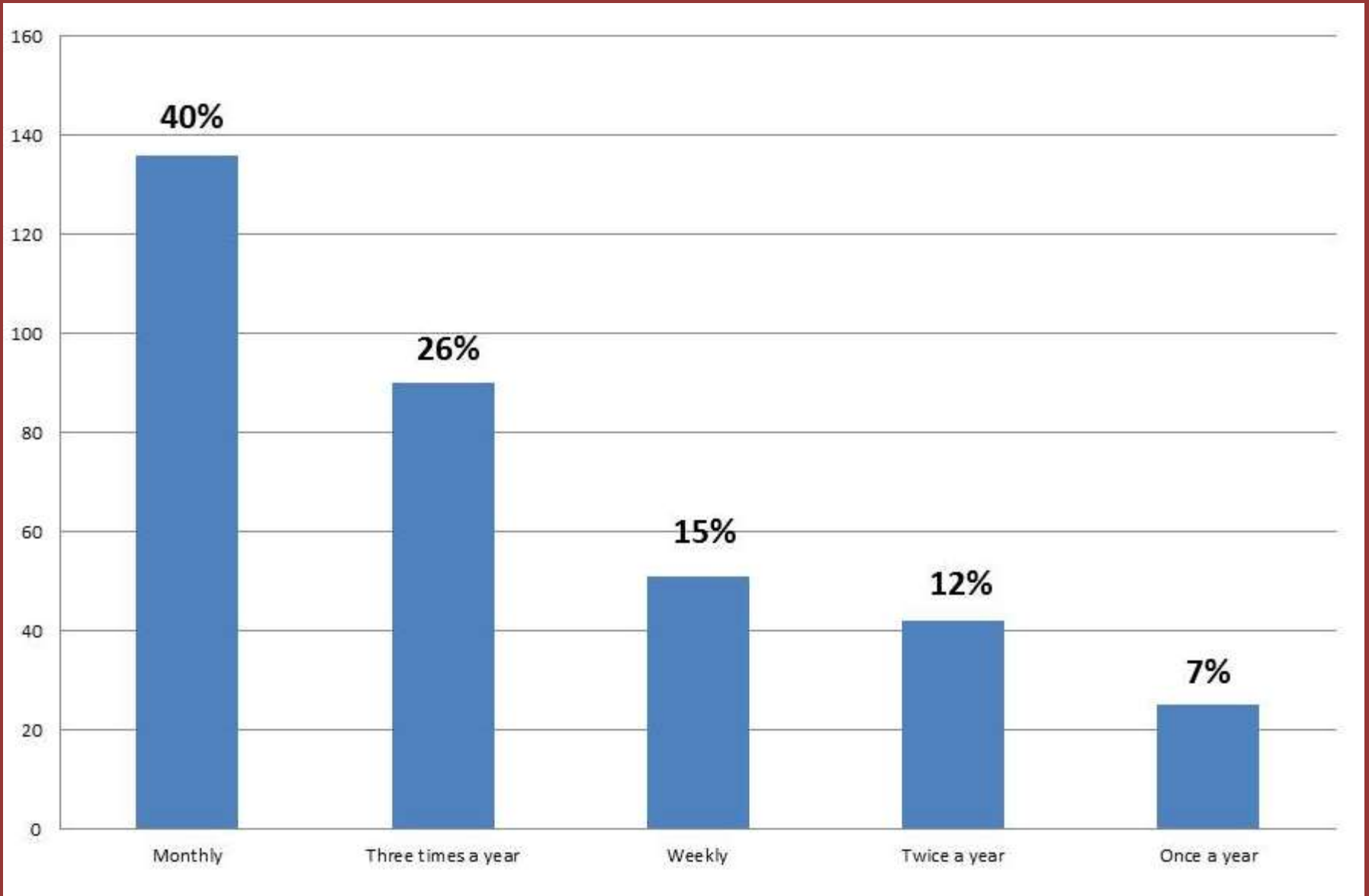
## SAMPLE INTERVIEW QUESTIONS:

- 1) What do you value about (activity)?
- 2) What is your impression of the Pass?
- 3) Do you have any memorable stories from times on the Pass?
- 4) What is important to a quality experience doing (activity) on the Pass?

# When Users Visit Pass (Responses = 408)



# How Often Users Visit Pass (Responses = 344)



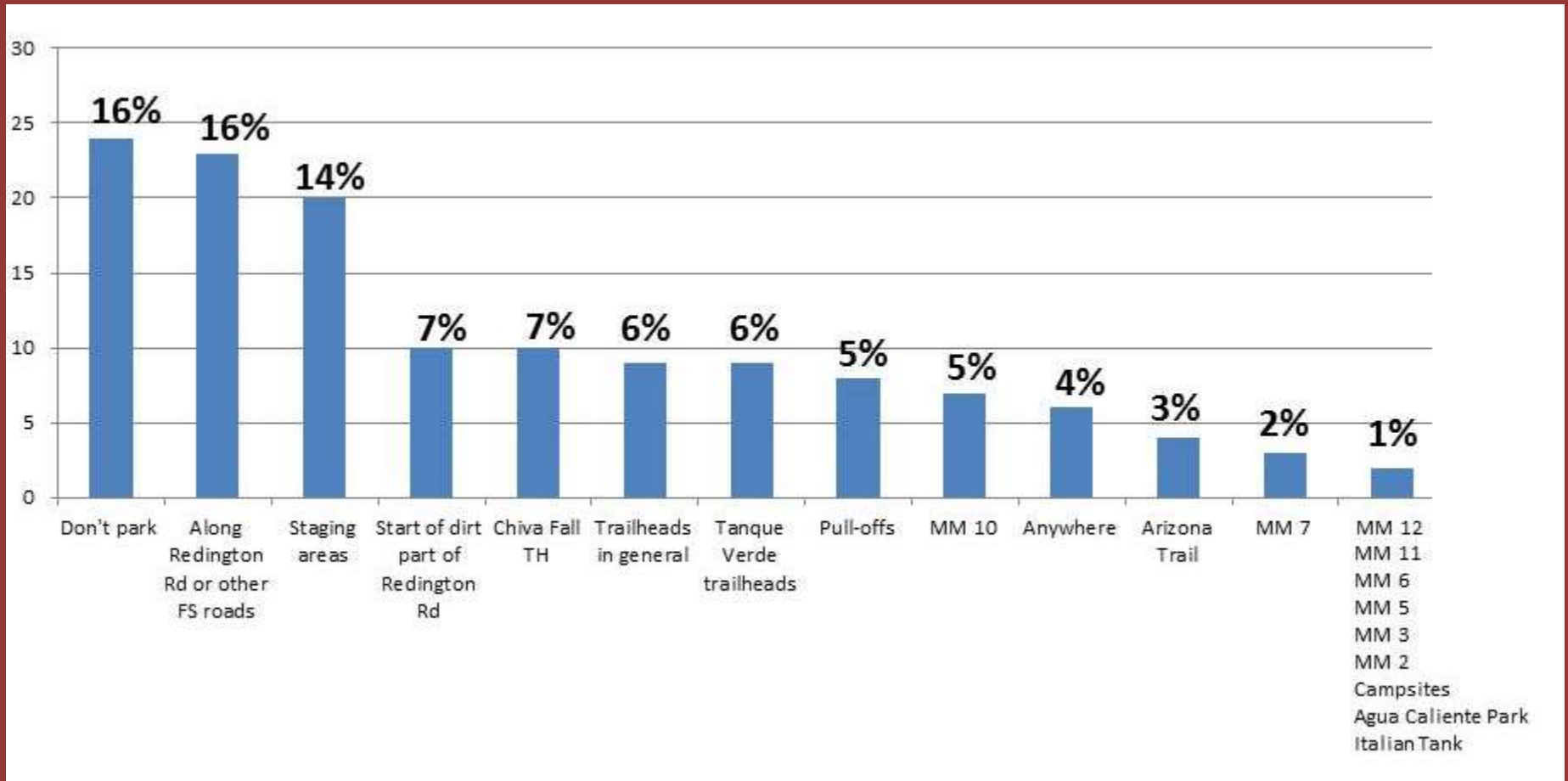


Avg. distance driven to reach Pass (n=273): **18 miles**

Avg. length of visit (n=274): **7 hours**

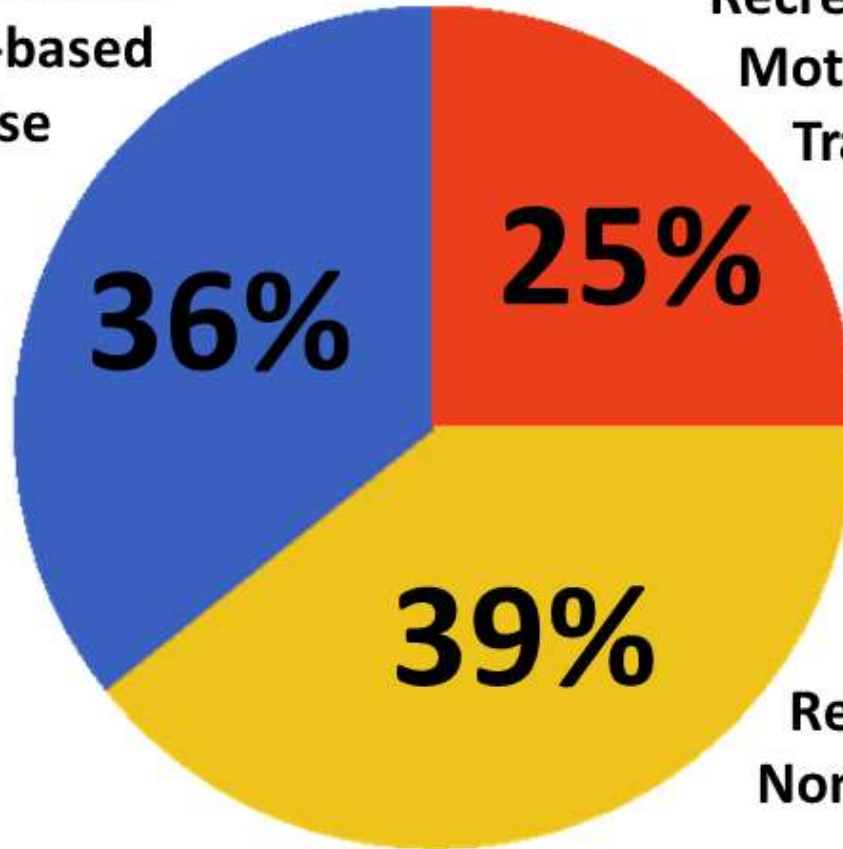
Avg. round-trip distance on Pass (n=259): **25 miles**

# Parking on Pass (Responses = 148)





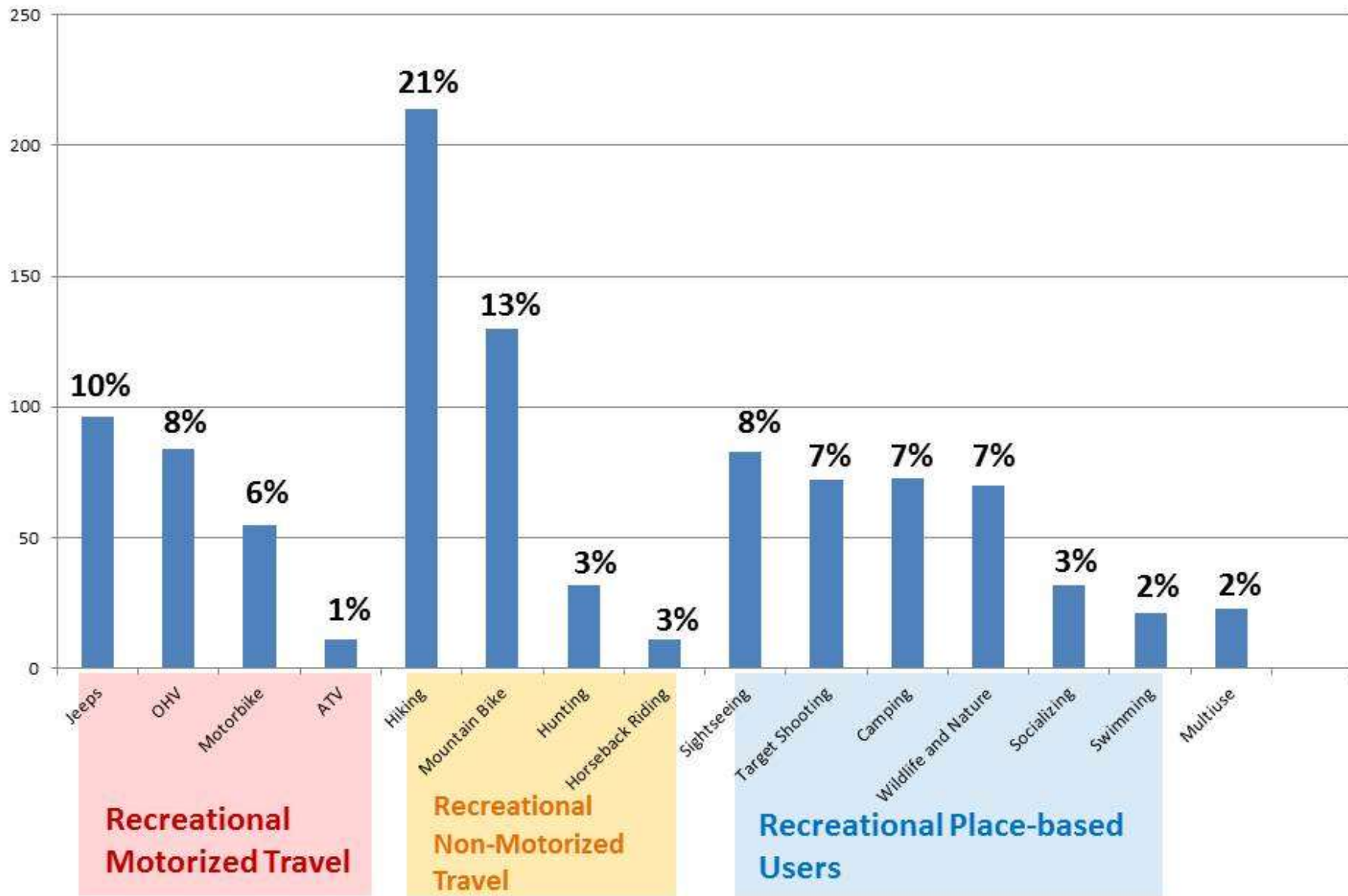
**Recreational  
Place-based  
Use**



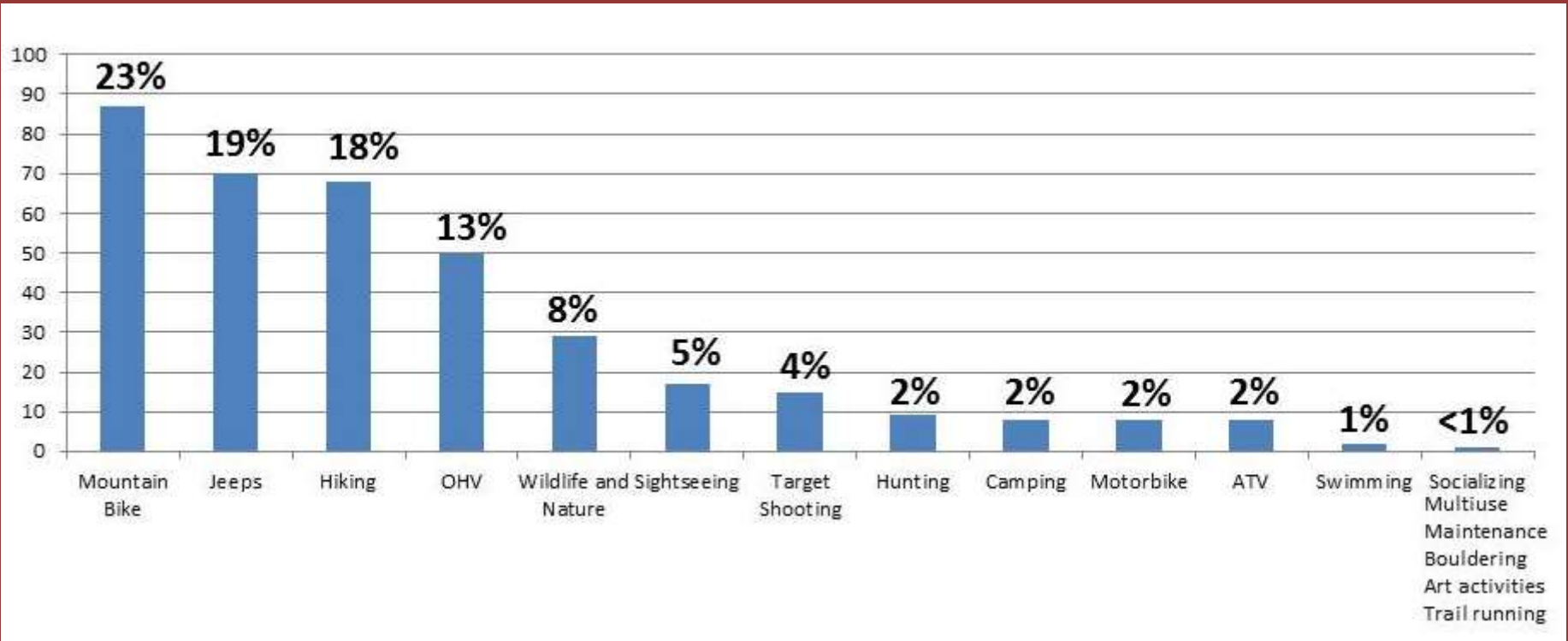
**Recreational  
Motorized  
Travel**

**Recreational  
Non-Motorized  
Travel**

# All Favorite Activities (Responses = 1,007)

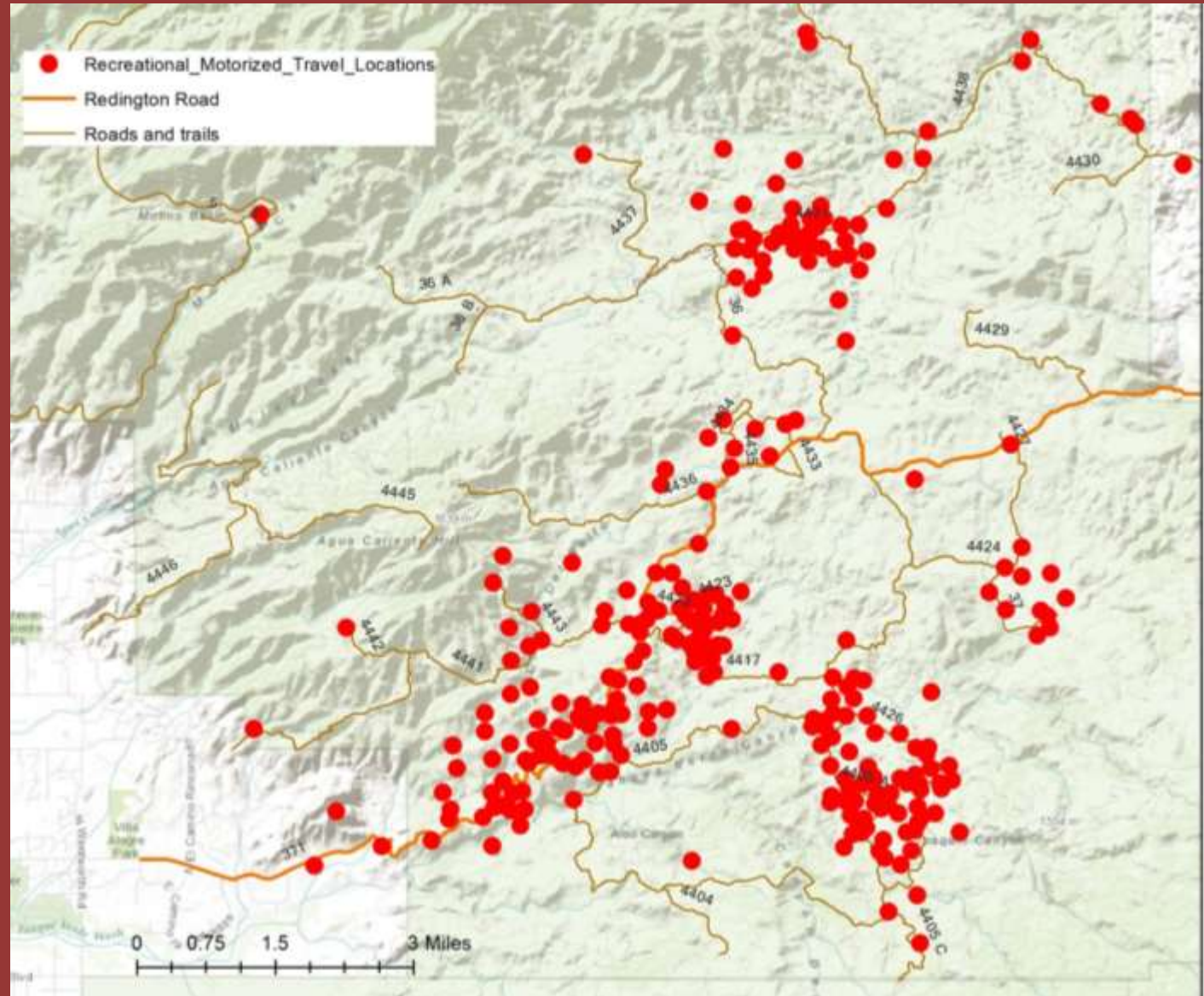


# Most Favorite Activity (responses = 377)



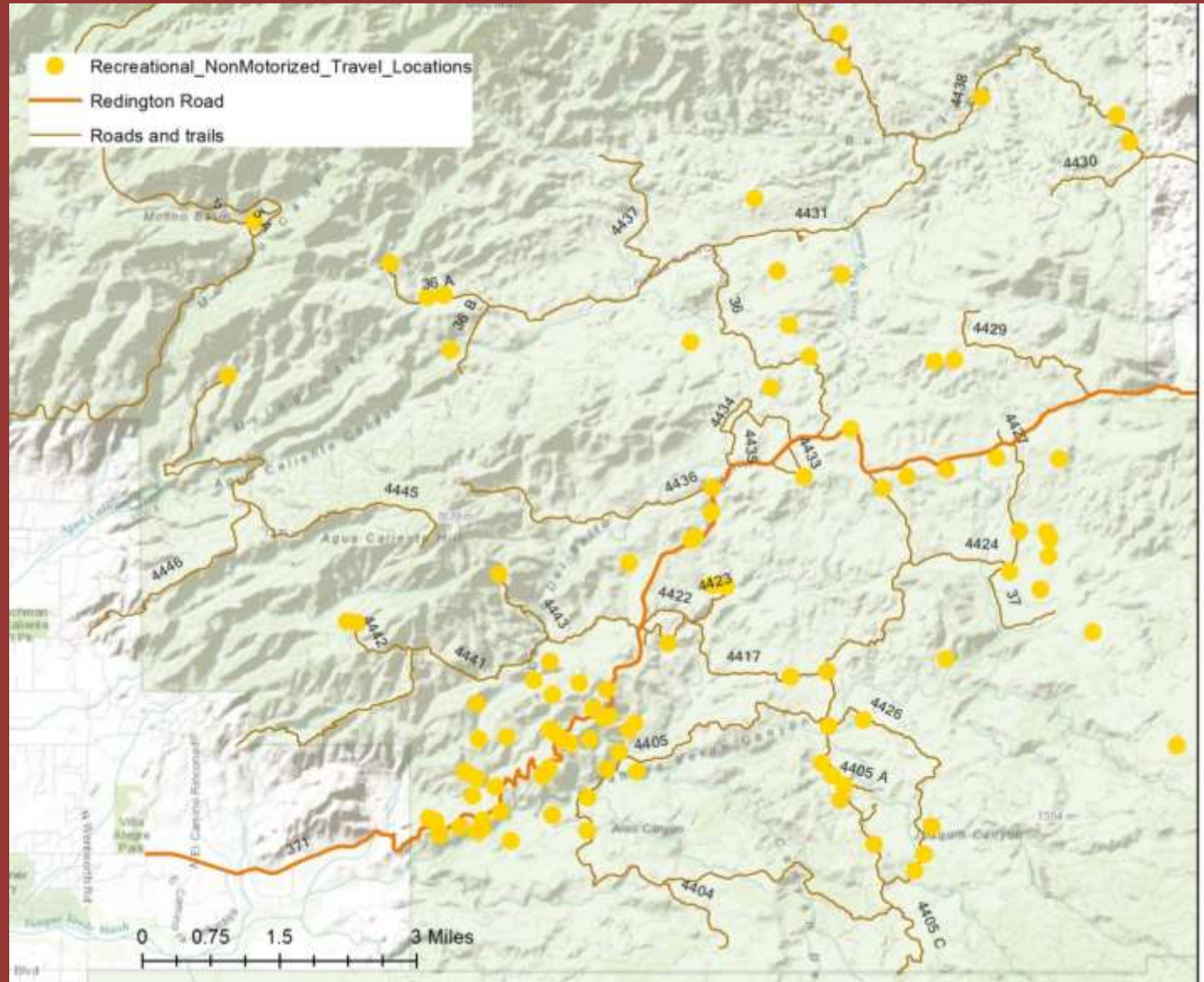
# Recreational Motorized Use (Total = 284 points)

- Jeeps
- ATV
- OHV
- Motorbike



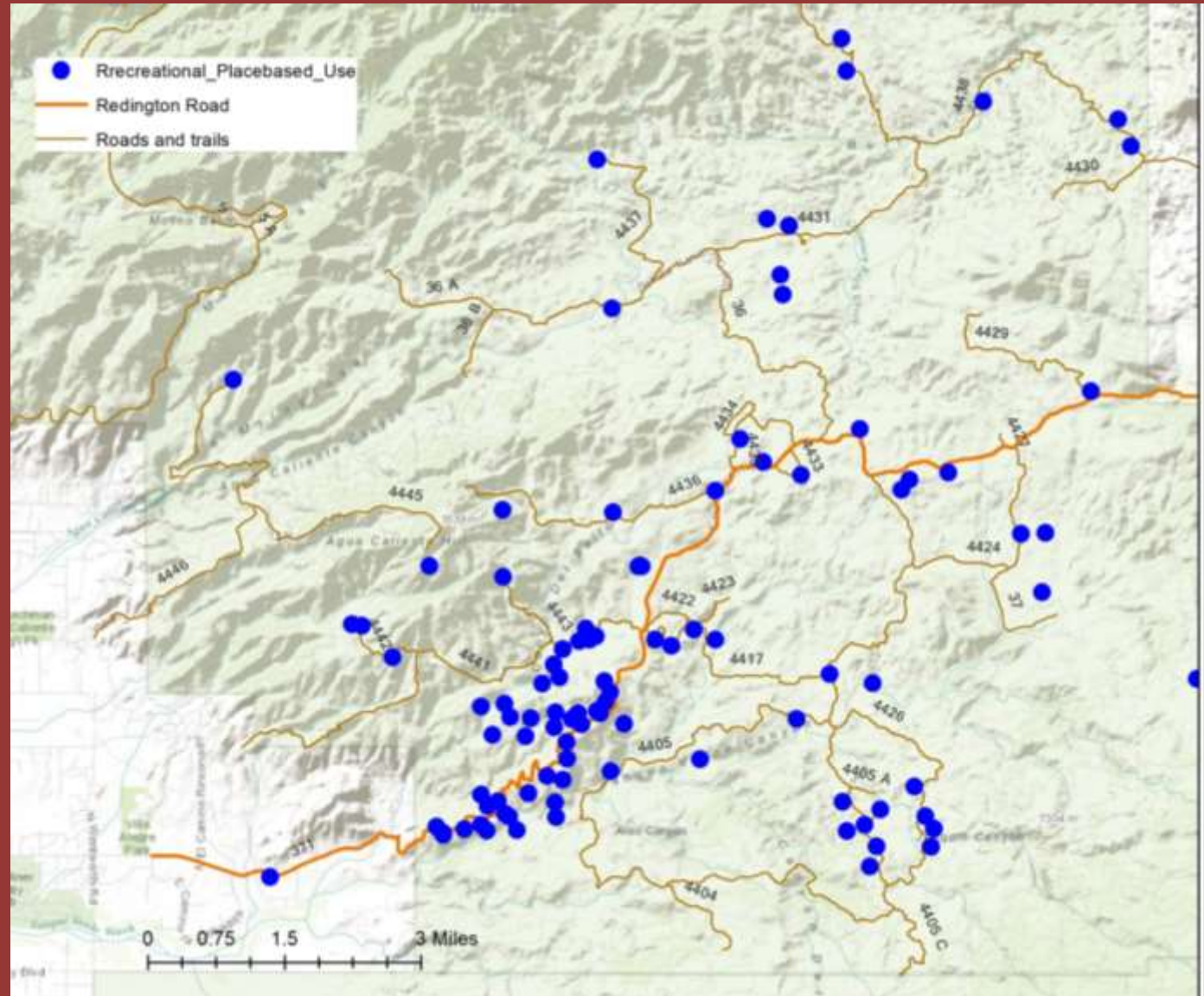
# Recreational Non-Motorized Use (Total = 69 points)

- Mountain Bike
- Hiking
- Horseback riding
- Hunting
- Bow Hunting

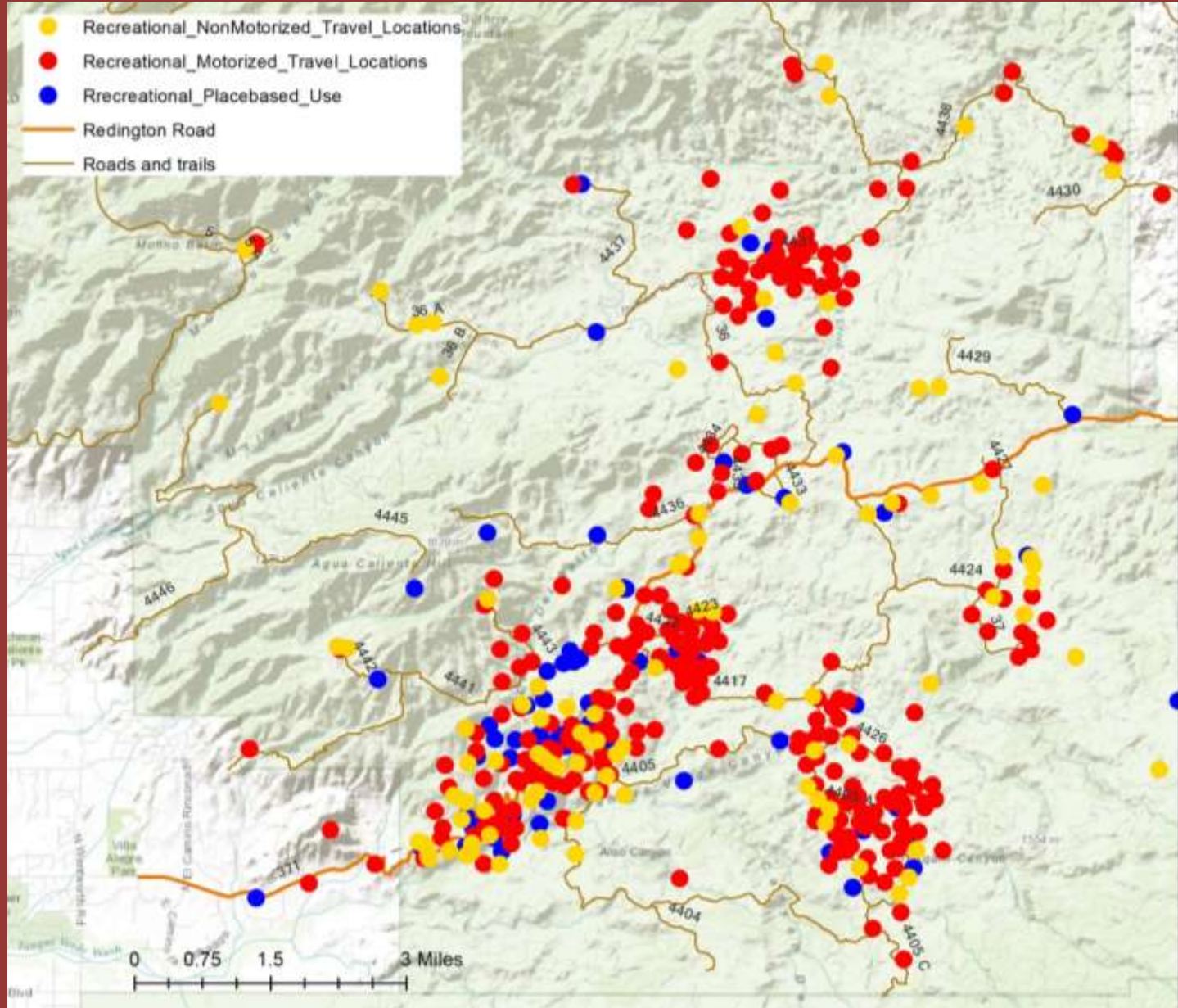


# Recreational Place-based Use (Total = 100)

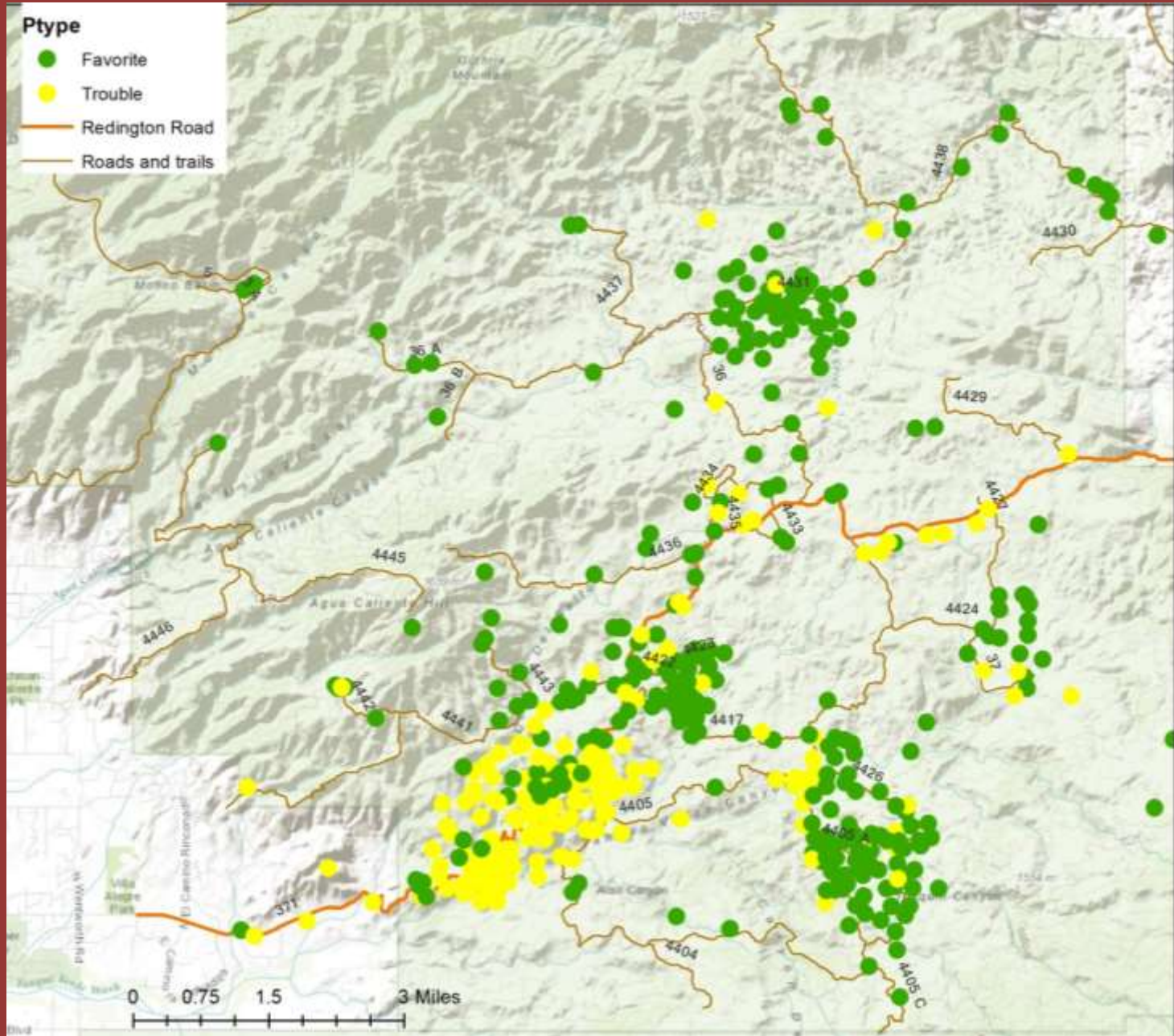
- Target shooting
- Camping
- Sightseeing
- Wildlife & Nature
- Socializing
- Swimming



# 3 Recreational Categories, Across Study Area (Total points = 480)

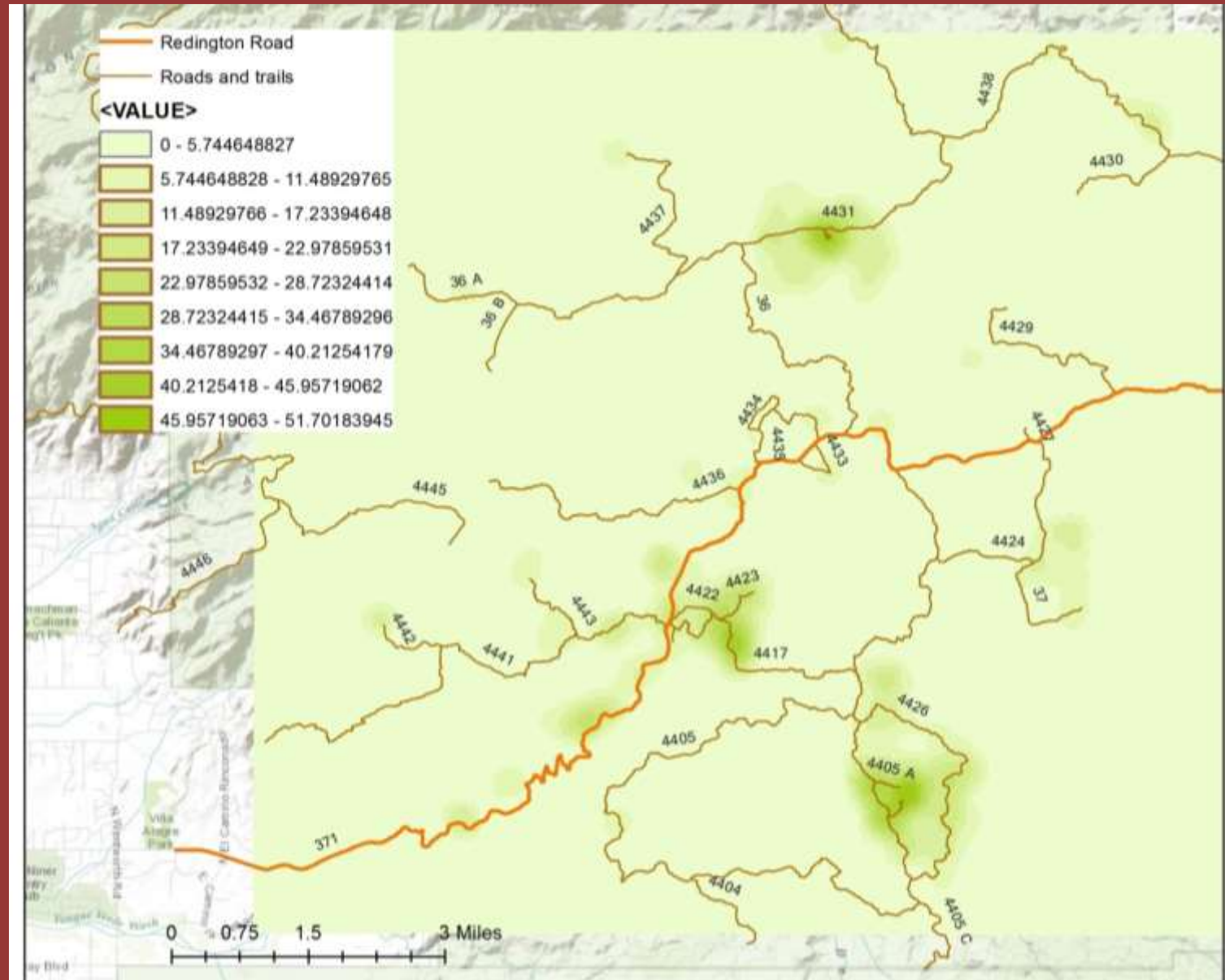


# Favorite and Trouble Spots (Total = 480)

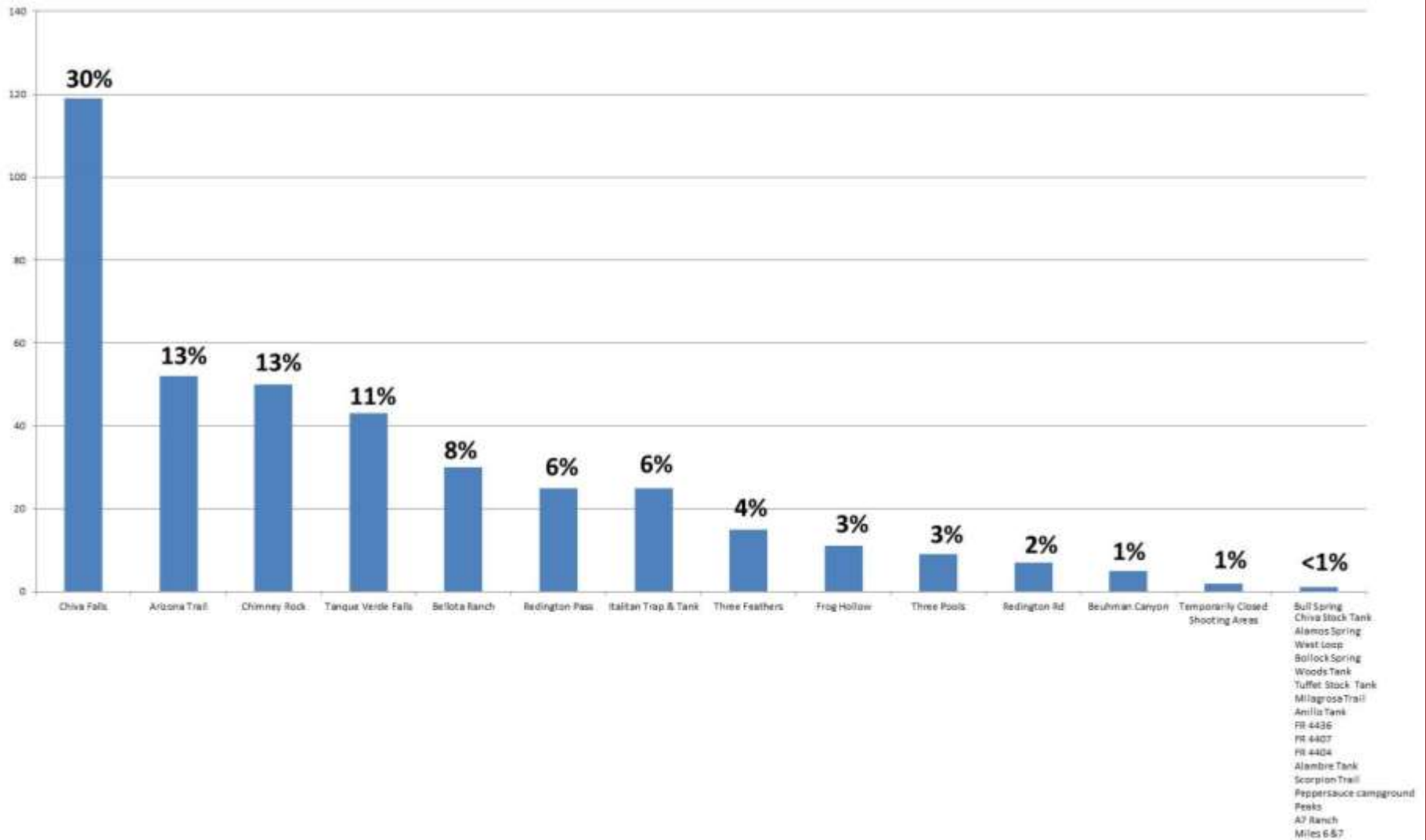




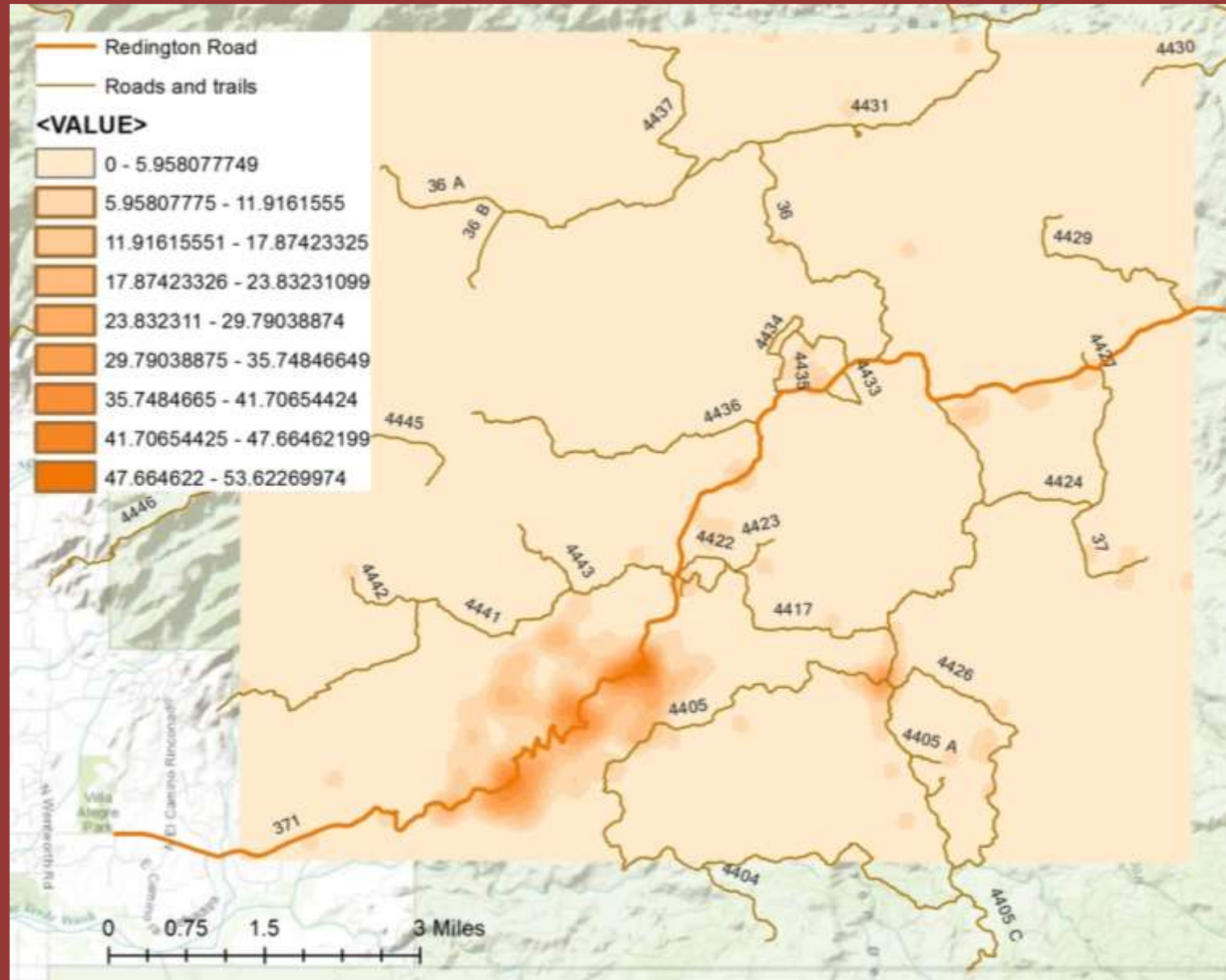
# Density of Favorite Spots (magnitude per unit area between points)



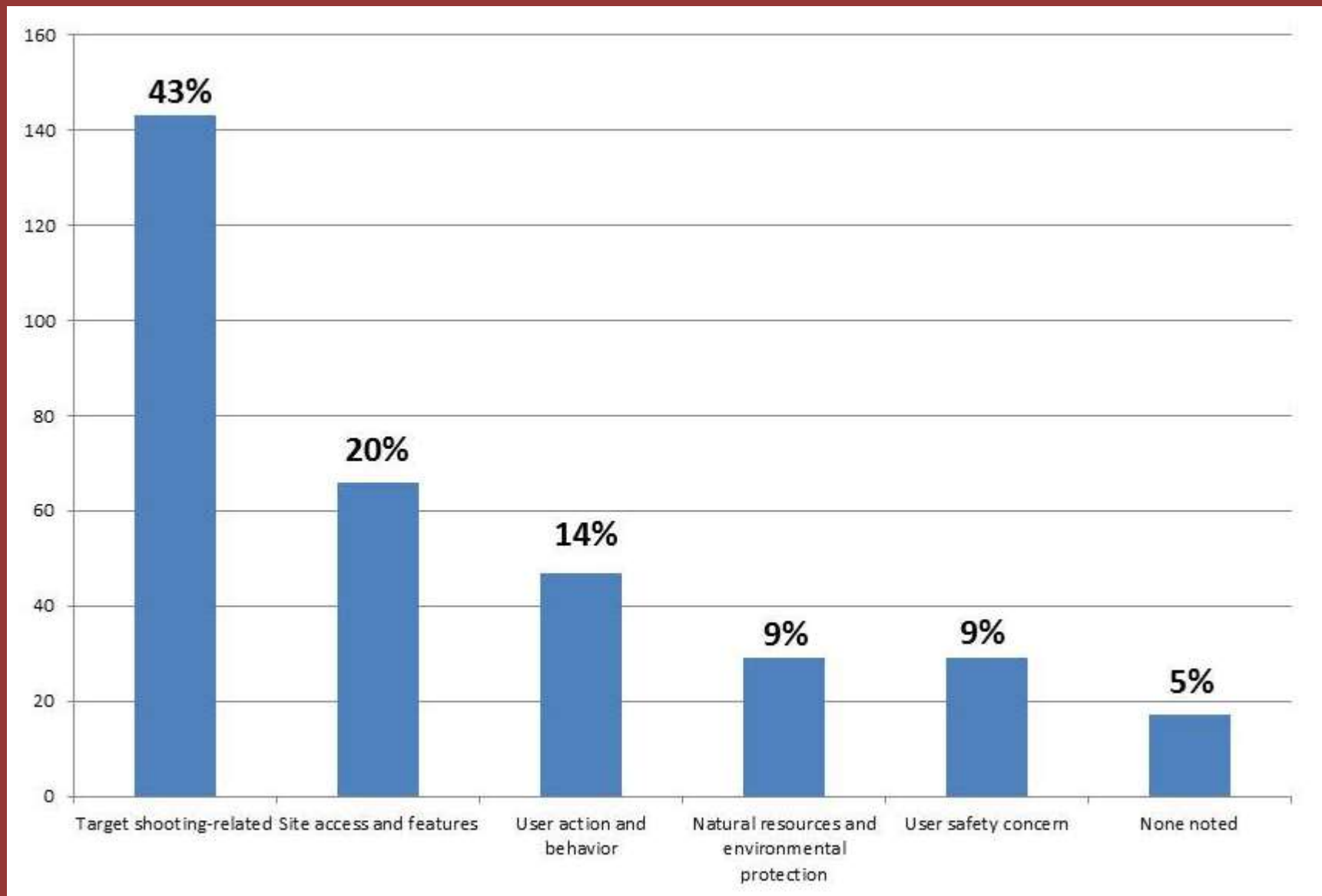
# Favorite Locations on Pass (Responses = 394)



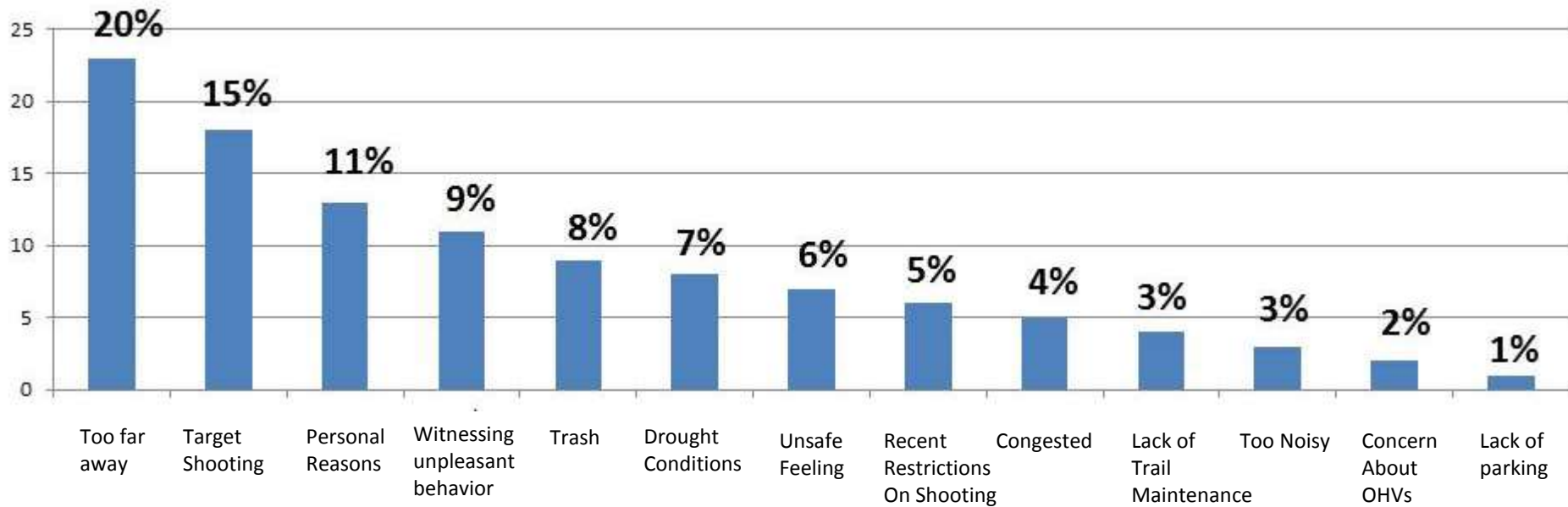
# Density of Trouble Spots (magnitude per unit area between points)



# Issues Noted (Responses = 331)



# Reasons for Not Visiting the Pass (Responses = 117)



# VALUES

- Rural Backcountry Landscape
- Crossroads Location
- Lasting Quality
- Open Accessibility
- Road and Trail Network
- Rugged Outback Nature
- Its Our Pass

# ISSUES

- Managing recreational target shooting
- Improving access and landscapes
- Handling overuse and misuse at specific sites
- Managing conflicts with others behavior