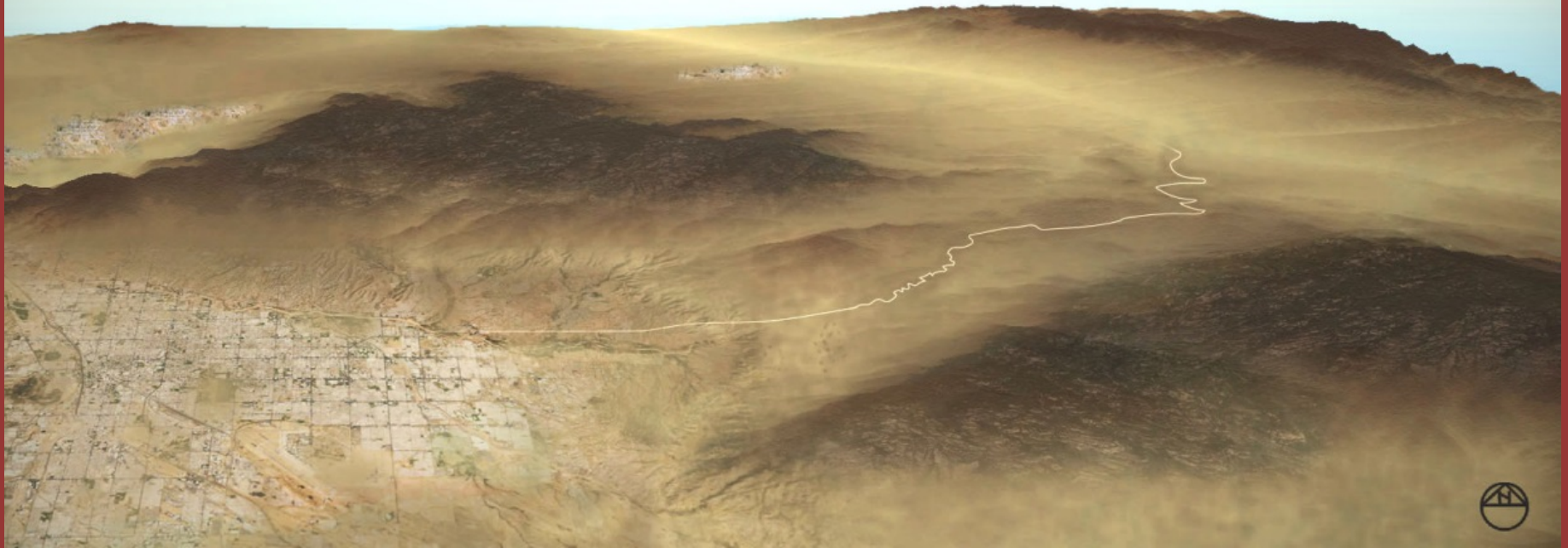


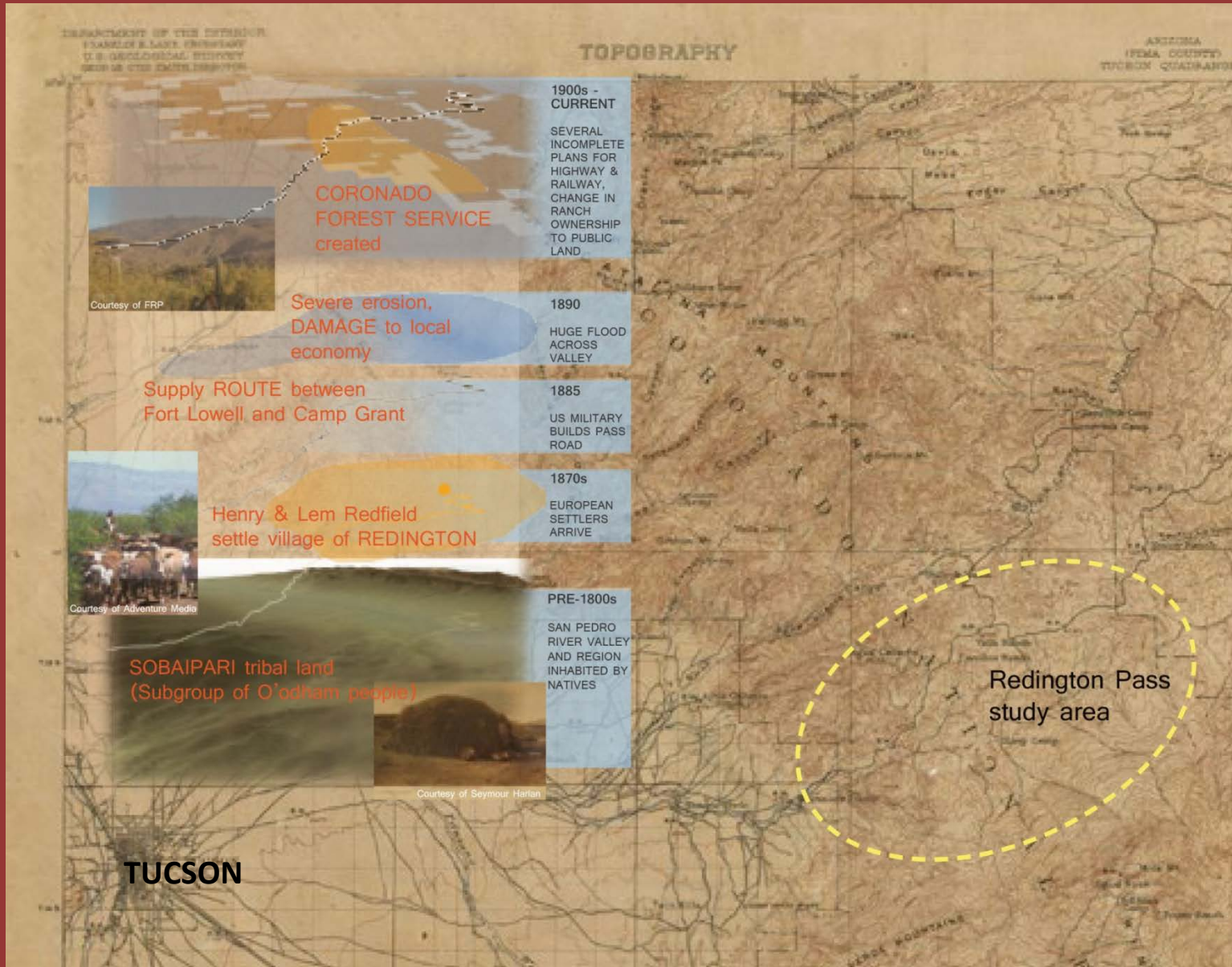
REDINGTON PASS SITE ANALYSIS



Connectivity of the Pass

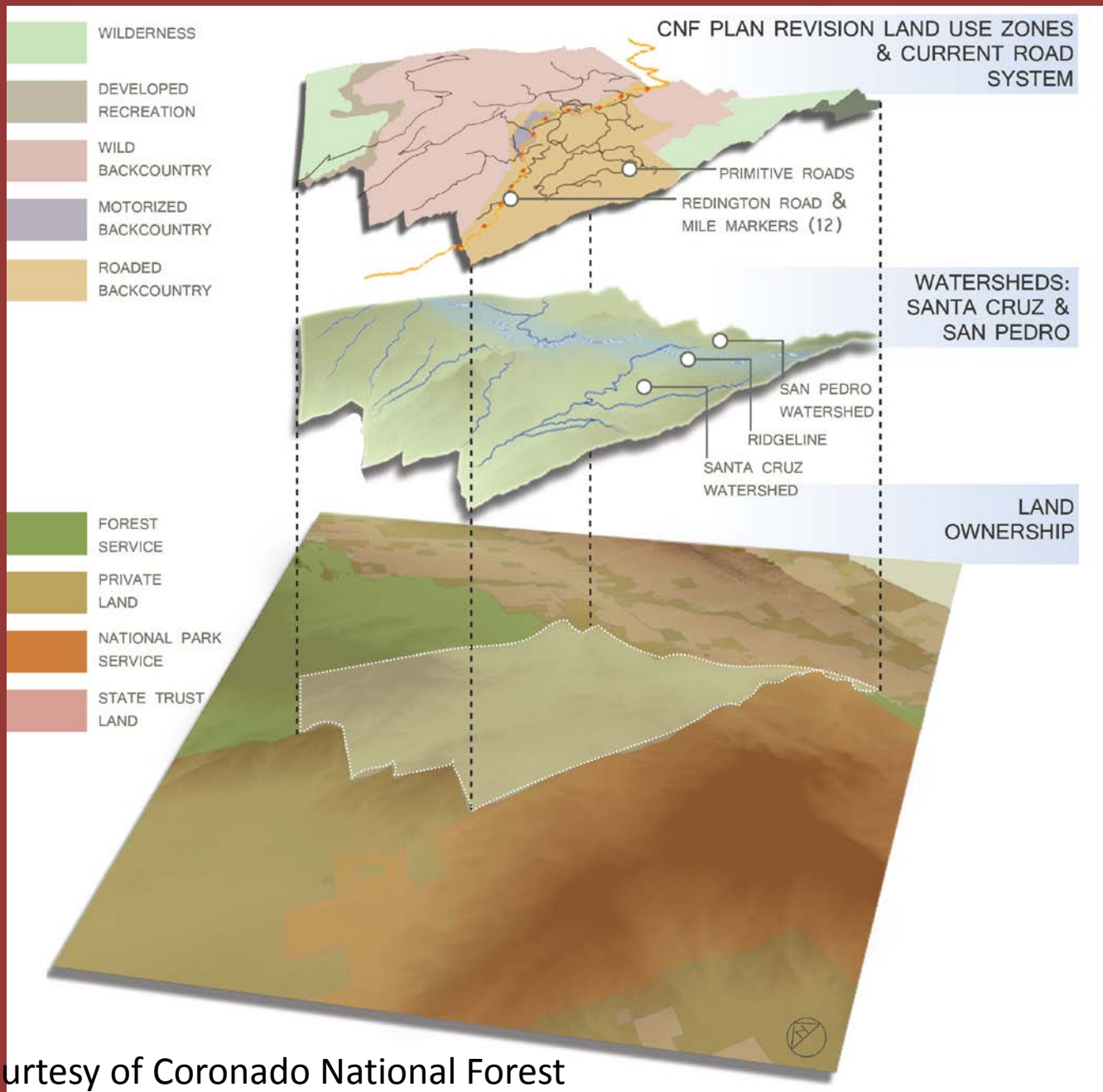


A Historical Story

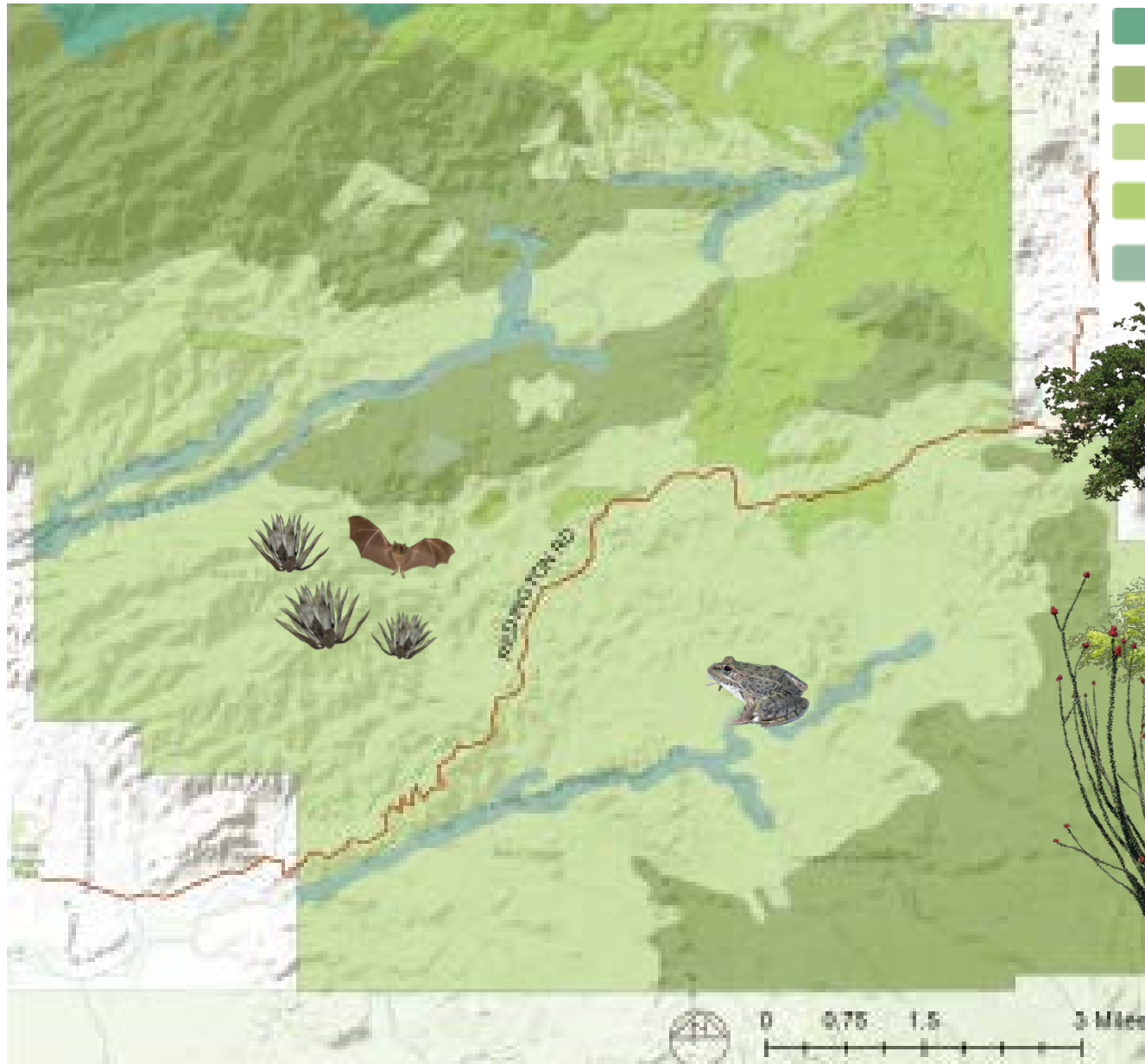


Base Map: 1904 Tucson Topographic Map Excerpt, 1:125,000
University of Texas Perry-Castaneda Library Collection

Land Ownership, Geographic Boundaries, & Land Use



Ecological Diversity

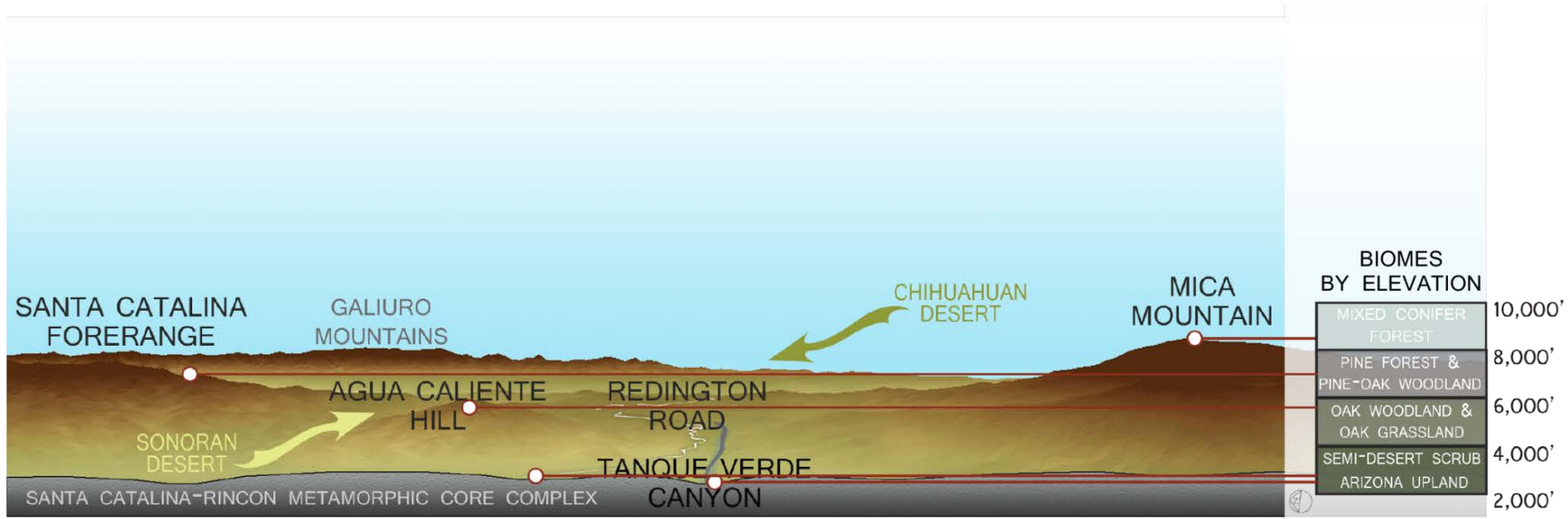


- CONIFEROUS FOREST
- BROADLEAF WOODLAND*
- SOUTHWESTERN DESERTSCRUB
- CONIFEROUS WOODLAND
- DECIDUOUS RIPARIAN



GIS data courtesy of
Coronado National
Forest

Ecological Communities by Elevation & Distinct Species



RIPARIAN AREA DEVELOPED AROUND WATERING TANK



COTTONWOOD: *POPULUS FREMONTII*

ARIZONA UPLAND ALONG REDINGTON ROAD



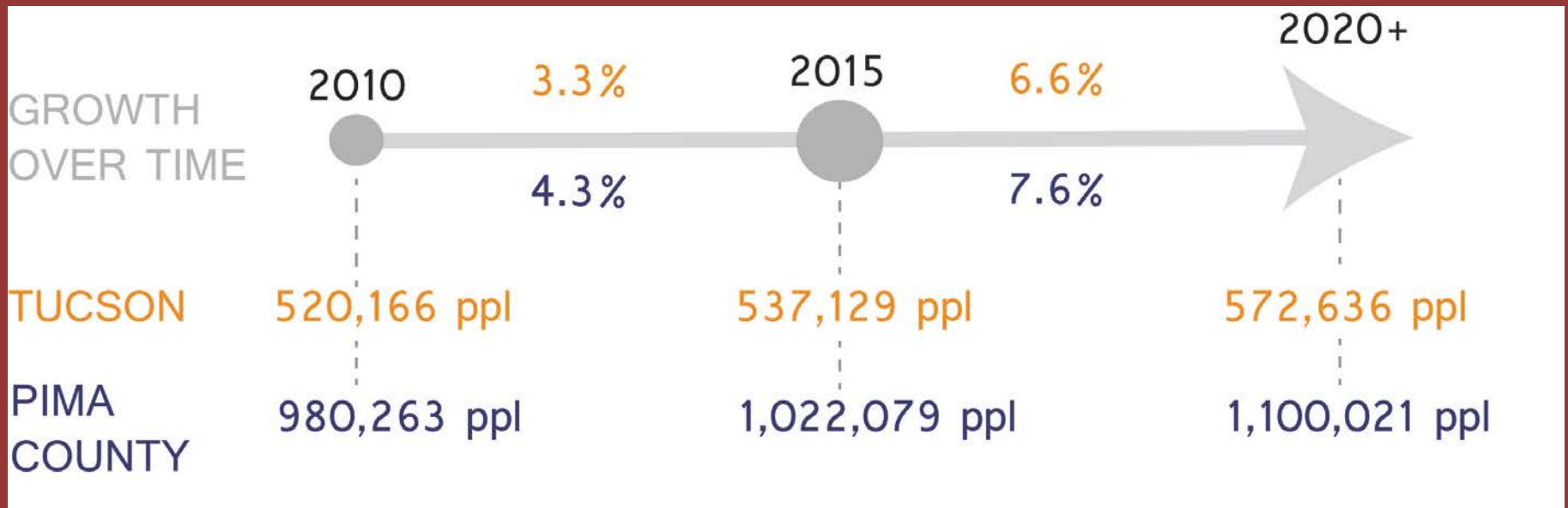
SAGUARO: *CARNAGIEA GIGANTEA*

HIKING THROUGH OAK-WOODLAND



MEXICAN BLUE OAK: *QUERCUS OBLONGIFOLIA*

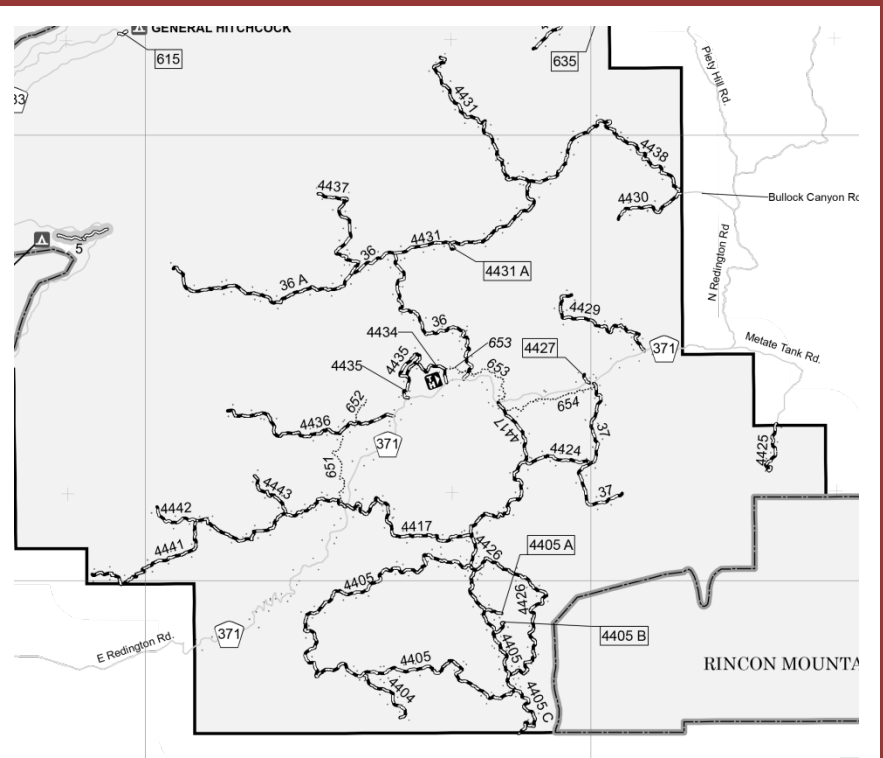
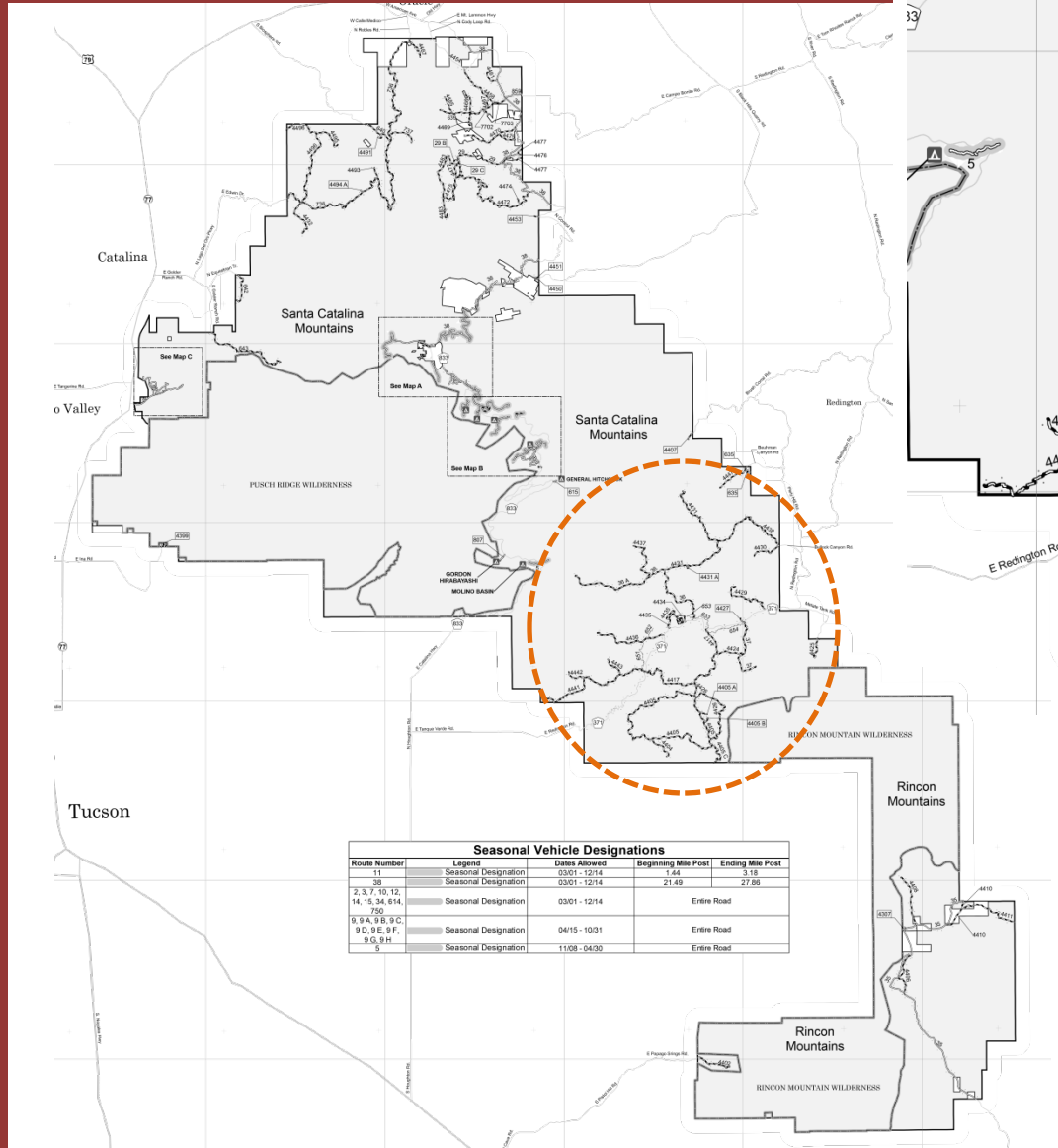
Population Growth: 2010-2020



Pima Association of Governments

2013-2050 Incorporated Places Population Projections in Pima County

Denser Road Network



From the current CNF Motor Vehicle Use Map (MVUM)